

Evaluation of Students' Answer scripts Using Soft Computing Techniques

Vaishali Malpe¹, Shalini Bhatia²

^{1,2} Computer Department, TSEC, Mumbai University, India

ABSTRACT

By introducing a new fuzzy evaluation sheet, we believe it portrays additional information on students' performances in answering each question in a test or examination compared to conventional marking method. Moreover, this approach can be used to compare students' performances which have the same final linguistic terms by looking into each question and each criterion. This paper presents a new method for students' learning achievement evaluation by automatically generating the weights of the attributes "accuracy rate", "time rate", "difficulty", "complexity", "answer-cost" and "importance", respectively, with the fuzzy reasoning capability. The proposed method normalizes the adjustment quantity to insure the fairness of the adjustment in each inference result. It can provide us much fairer and more reasonable inference results for students' learning achievement evaluation. It can evaluate students' answerscripts in a more flexible and more intelligent manner.

Keywords: Degrees Of Confidence, Index of Optimism (λ), Interval-valued fuzzy sets, Fuzzy Evaluation Marksheet, Fuzzy reasoning, Fuzzy rules, Grade Membership Functions, Result Transformer, Satisfaction Levels, Student Answer-script.

I. INTRODUCTION

Evaluation of students' answerscripts normally done by the two popular existing systems: grading system and traditional marking system. Types of questions are assumed to be such that answers are of subjective types only. In traditional system of evaluation, "marking" i.e. awarding of marks is done, whereas in the Grading system of evaluation, "grading" i.e. awarding of grades is done. Evaluation of students' learning achievement is the process of determining the performance levels of individual students in relation to educational objectives.

1.1 Theoretical Issues

At present, students' answerscripts have subjective evaluation by evaluator in many universities/ institutions. In current scenario, the evaluation done by evaluators has some limitations as follows:

1. Single vs. Multiple evaluator

Single evaluator evaluates all the answerscripts as per his own judgement so there is no unfairness to those students. But if some papers are evaluated by one evaluator while others are by different evaluator, then depending on the nature of assessment (i.e. strict, normal, lenient) of

evaluator there is a chance that some students get good marks as compared to others because of diversity in subjective assessment level of different evaluators.

2. Level of satisfaction

In subjective evaluation there is no flexibility to consider the evaluator's different levels of satisfaction so as to accurately assess the answerscripts.

3. Degree of confidence

In current situation, evaluator's degree of confidence in awarding a particular grade/mark is not considered which reflects in less accurate evaluation.

4. Lack of details in result

Student is provided only with the final marks of subject and not the detailed additional information in assessment like how marks are awarded based on accuracy, coverage, difficulty, complexity, etc. in answering each question in a test/examination.

5. Assurance for similar scoring criteria

Assessing a particular student's answerscript by an evaluator can be problematic because this makes it hard to ensure that the scoring criteria are applied to one student is also applied in the same way to other students.

6. Increasing number of evaluators and answerscripts

As the number of evaluators and the number of papers to be evaluated increases, there is less and less likelihood of applying the scoring criteria the same way every time.

7. Personal factors

Personal factors like fatigue and myriad may affect consistency in the evaluation process.

II. RELATED WORK

Until now, some methods have been presented for dealing with students' evaluation:

In [1], Bai and Chen presented a method for automatically constructing grade membership functions of lenient-type grades, strict-type grades, and normal-type grades given by teachers. Based on the constructed grade membership functions, system can perform fuzzy reasoning to infer the scores of students. It provides a useful way to evaluate students' answerscripts in a smarter and fairer manner.

In [2], Biswas presented Fuzzy Evaluation Method (fem) and a Generalized Fuzzy Evaluation Method (gfem) for applying fuzzy sets in students' answerscripts evaluation is

developed. These methods have the drawbacks. (1) Because a matching function is used to measure the degrees of similarity between the standard fuzzy sets and the fuzzy marks of the questions, it will take a large amount of time to perform the matching operations. (2) Two different fuzzy marks may be translated into the same awarded grade and it is unfair for students' evaluation.

Chen and Lee [3] presented two methods for applying fuzzy sets in students' answerscripts evaluation to overcome these drawbacks. The methods presented in [3] are much faster in execution and fairer in the task of student evaluation. The method has the drawback. It cannot deal with the situation where the evaluating values are represented by fuzzy numbers associated with degrees of confidence between zero and one and they do not consider the degree of optimism of the evaluator in evaluating students' answerscripts. If these factors are considered, there is room for flexibility.

In [4], Chen and Wang presented new methods for evaluating students' answerscripts based on interval-valued fuzzy grade sheets. Marks awarded to the answers in the students' answerscripts are represented by interval-valued fuzzy sets. The degree of similarity between an interval-valued fuzzy mark and a standard interval-valued fuzzy set is calculated by a similarity function. An index of optimism k determined by the evaluator is used to indicate the degree of optimism of the evaluator.

In [5] Hui-Yu Wang and Shyi-Ming Chen presents a new approach for evaluating students' answerscripts using fuzzy numbers associated with degrees of confidence of the evaluator. The satisfaction levels awarded to the questions of students' answerscripts are represented by fuzzy numbers associated with degrees of confidence between zero and one.

In [6], Saleh and Kim proposed a method for evaluation of students' answerscripts using fuzzy system. This method applies a fuzzification, fuzzy inference, and defuzzification considering the difficulty, the importance and the complexity of questions. This method has an advantage. The transparency, objectivity, and easy implementation provide a useful way to automatically evaluate students' achievement in more reasonable and fairer manner. It persuades students who are skeptical and not satisfied with the evaluation results. This system has a drawback. It requires the domain experts to decide the values of complexity and importance. Experts' decision is the challenging task.

In [7], Li and Chen proposed the method for answerscripts' evaluation in which the weights of the attributes accuracy rate, time rate, difficulty, and importance are generated automatically with the fuzzy reasoning capability. This method normalizes the quantity to insure the fairness of adjustment in each inference results for student's learning achievement evaluation.

Nolan has discussed the design and development of an expert system fuzzy classification scoring system [8]. The

main function of the expert fuzzy classification scoring system is to support teachers in the evaluation by providing them with uniform framework for generating ratings based on the consistent application of scoring rubrics. An experiment demonstrated that teachers using expert fuzzy classification scoring system can make assessments in less time and with a level of accuracy.

In [9], Wang and Chen presented a new method for evaluation using vague values. The vague mark awarded to each question can be regarded as a vague set, where each element in the universe of discourse belonging to the vague set is represented by the vague values. Methods presented in [2] have used the fuzzy sets. In a fuzzy set, the grade of membership of an element is represented by a real value between zero and one. Single value between zero and one tells nothing about the accuracy of a number. So if the number is presented as a vague set, then there is a room for more flexibility.

In [10], Bardul proposed a method to evaluate the students' performances as individual and as a group. The main objective of this study is to improvise the existing fuzzy approach in assessing students' performance. This study focuses on two types of assessments namely students' answer scripts assessment and students' group assessment. In the students' answer scripts assessment the trapezoidal fuzzy number is used to represent the standard satisfaction level for the grading scales and the students' fuzzy scores. The center points of both standard satisfaction levels and the fuzzy score is calculated using the center of gravity method. In the students' group assessment instructors as well as students are involved in selecting and determining the assessment criteria. The pair-wise comparison technique based on fuzzy scales is used to find the relative strength between each criterion. The weights of selected criteria are represented by the normalized fuzzy eigenvectors. The fuzzy relation composition method is employed in order to combine the instructor and students' evaluation, which finally gives the overall students' group performance. Both the answer scripts assessment and group assessment processes can be easily performed with the aid of fuzzy assessment sheet. This integrated fuzzy approach provides additional information on students' performance and can be used as an option for instructors to assess students' performance.

Wang and Chen presented new methods for evaluating the answerscripts of students [11], where the evaluating values are represented by fuzzy numbers, and an optimism index λ determined by the evaluator is used to indicate the degree of optimism of the evaluator for evaluating the answerscripts of students, where the value of λ is between zero and one. The universe of discourse is formed by a set of satisfaction levels. The fuzzy mark awarded to the answer of each question of the answerscript of a student is represented by a type-2 fuzzy set. The proposed methods can overcome the drawbacks of the methods presented in [2] and [3]. It can evaluate the answerscripts of students in a more flexible and more intelligent manner.

In [12], the analysis of students' evaluation, especially in the case of the students' answerscripts under the evaluation grade of linguistic data is discussed. Chih-Hsun Hsieh transfer mostly linguistic data, subjective message into triangular fuzzy numbers, and use the function principle instead of the extension principle to calculate the students' score. The principle does not change the type of membership function and will reduce the trouble and tediousness of operations. In addition, the degree of similarity between two fuzzy numbers is defined with the utility value of fuzzy number to transfer the students' score into letter-grade score.

In [13], Bardul and Mohamad presented a method that uses normalized values to represent some of extreme cases of satisfaction levels and utilize fuzzy numbers to generate more consistent fuzzy marks. After the instructors mark the scripts by using the traditional method, the satisfaction levels of each question will be identified by using fuzzy numbers. Then, the degree of satisfactions of each question will be calculated. The fuzzy marks will be generated to produce the total score. Finally, the fuzzy grade will be obtained. The result that based on the fuzzy sets approach could provide more and better information which portrays the student performance of each question. Thus, this paper attempts to overcome the drawbacks identified in technique carried out by Chen and Lee [3].

The drawbacks and the alternative ways suggested to overcome them are explained as follows:

1. Chen and Lee [3] have a fixed value for each satisfaction level. However, in [12], researchers used normalized values to represent the degree of satisfaction for lower extreme cases (i.e. grade E) and for upper extreme cases (i.e. grade A) while keeping the degree of satisfaction of A-, B+, B, B-, C+, C, C-, D+, and D.
2. Chen and Lee [3] did not utilize the advantage of using fuzzy numbers in their evaluation method. In [12], fuzzy numbers are used as this technique can provide equations for each grade and finally produce a consistent result.
3. Chen and Lee [3] also mentioned that the higher the degree of satisfaction the more the fuzzy mark satisfies the instructor's opinion. The drawback is that the fuzzy marks given are merely based on the instructor's opinion. In [12], the authors used fuzzy numbers to generate a more consistent fuzzy mark.

III. WORKFLOW OF PROPOSED FUZZY EVALUATION SYSTEM

In the proposed project, a new method for evaluating students' answerscripts is presented where evaluating marks awarded to the questions in answerscripts are represented by vague values. An index of optimism λ is determined using common answerscript assessed by each evaluator. This indicates the degree of optimism of the evaluator, where $\lambda \in [0, 1]$. The evaluation satisfaction levels awarded

to each questions are obtained by using the expected truth values of each vague satisfaction values. Degree of confidence associated with satisfaction level is used to calculate α -cut which in turn is used to calculate the total mark of each student. A method is presented to automatically construct the grade membership functions of lenient-type grades, strict-type grades and normal-type grades, given by teachers, respectively. Based on the constructed grade membership functions, the system performs fuzzy reasoning to infer the scores of students. Automatic generation of weights of attributes "accuracy rate", "coverage rate", "difficulty", "complexity", "answer-cost" and "importance" is done with the fuzzy reasoning capability. It is used to normalize the adjustment quantity with which the result is adjusted to insure fairness. It provides a useful way to evaluate students' answerscripts in a smarter and intelligent manner.

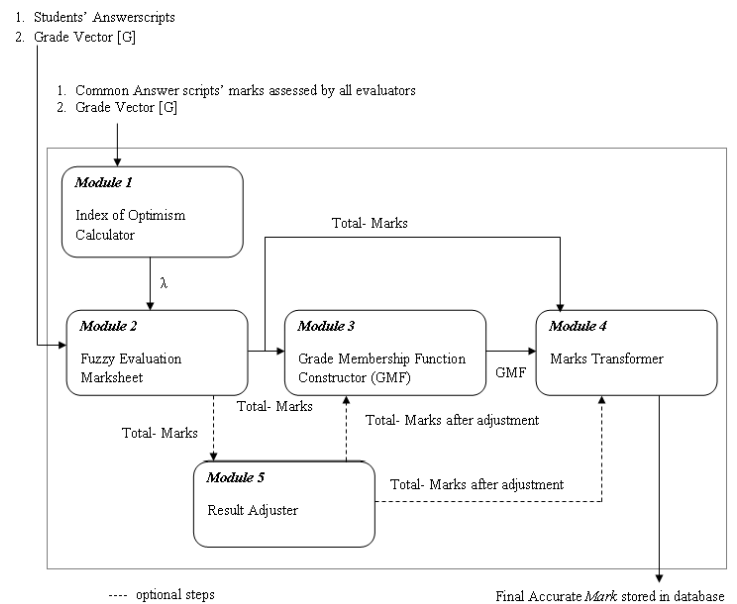


Fig. 1 Workflow of proposed Fuzzy Evaluation System

Modules:

1. Index of Optimism Calculator of a Teacher
2. Fuzzy Evaluation Marksheet
3. Grade Membership Function Constructor
4. Marks Transformer
5. Result Adjuster

The formulation for this proposed system done as follows:

Module 1: The Evaluators' index of optimism λ is calculated, where $\lambda \in [0, 1]$. A common answerscript is shared with all the evaluators to assess by traditional marking method. All these marks are collected to identify the diversity of range in awarding marks to students. Minimum & Maximum numbers are identified from these numbers to set the evaluators index of optimism λ .

Module 2: Evaluator uses vague grade sheet as shown in Table 2 to award his/her satisfaction level of answer to each question rather than marks. The system converts vague marksheet into fuzzy marksheet as shown in Table 3 from

fuzzy marksheet, total mark of each student is calculated which is a crisp number.

Module 3: This optional module is considered when results obtained by module 2 are adjusted three node fuzzy evaluation system. The three node fuzzy evaluation system is shown in figure 6. The adjustment is done by considering the factors like complexity, difficulty of question paper which is decided by domain expert. This step gives adjusted mark that is scaling up or down the total marks.

Module 4: Using the marks obtained by module 2 / module 3, the grade membership functions are constructed for mapping strict / lenient mark to normal mark. The grade membership functions are formed using interpolation technique.

Module 5: Marks obtained by module 2 / module 3 are transformed to normal type using grade membership functions and detailed evaluation report is generated for each student.

IV. DESIGN CONSIDERATION

Module 1: Index of Optimism Calculator of a Teacher Marks of single shared common answerscript assessed by all evaluators are input to this module. The aim of this module is to calculate the index of optimism of a teacher. This module is shown in figure 2.

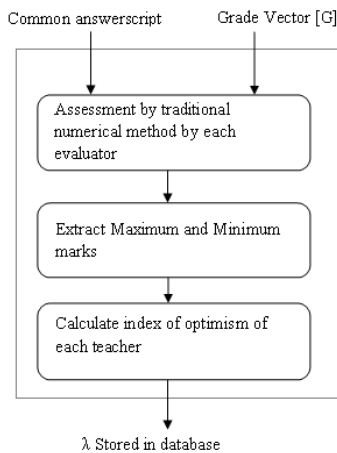


Fig 2 Calculation of index of optimism

Input:

1. Common subjective answerscript,
2. Grade vector [G] denoting assigned maximum mark of each question

Output:

1. Index of optimism of each evaluator

Algorithm:

- Step 1: Common subjective answerscript is given to all evaluators to assess it by traditional method.
- Step 2: The evaluated marks are stored in database.
- Step 3: Maximum (Max) & Minimum (Min) marks are extracted.
- Step 4: Index of optimism of Evaluator is then calculated

as,

$$\lambda = \frac{\text{Evaluator's_score} - \text{Min}}{\text{Max} - \text{Min}} \tag{1}$$

Step 5: Index of optimism is stored in database.

Module 2: Fuzzy Evaluation Marksheet

Evaluator’s degree of confidence is taken into account to generate the fuzzy interval of marks [x,y]. Question level degree of satisfaction is judged by evaluator with the help of satisfaction level rubric. Then defuzzify the question level interval marks to calculate total marks of each student. This module is shown in figure 3.

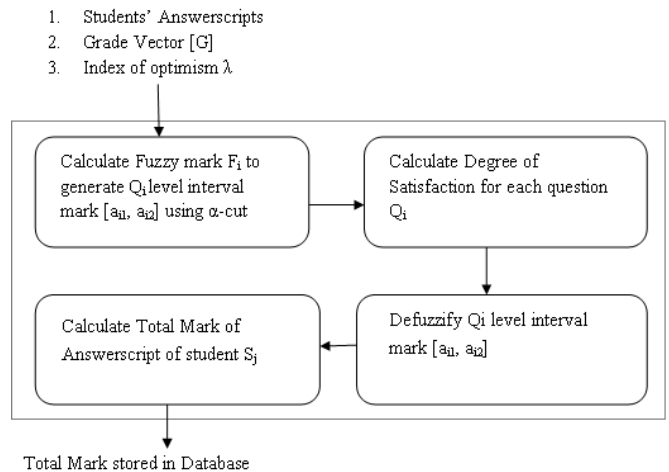


Fig 3 Fuzzy evaluation of student’s answerscripts

Input:

1. Subjective answerscript of each student S_j,
2. Grade vector [G] denoting assigned maximum mark of each question,
3. Satisfaction level Table 1,
4. Evaluators’ index of optimism λ, where λ ∈ [0,1]

Output:

1. Total marks stored in database

Algorithm:

Step 1: Calculate the expected truth value E(X_i) (Table 3) of each vague truth value X_i in the vague grade sheet shown in Table 2, where E(X_i) ∈ [0,1] and 1 ≤ i ≤ 11.

$$E(X) = (1 - \lambda) \times t_x + \lambda \times (1 - f_x) \tag{2}$$

Step 2: Calculate the corresponding expected truth value E(Y) of each satisfaction level Y in the vague grade sheet shown in Table 2, where Y ∈ {EG, VVG, VG, G, MG, F, MB, B, VB, VVB, EB} and E(Y) ∈ [0,1].

The degree of satisfaction D(Q.i) of the question Q.i of the student’s answerscript can be evaluated by the function D,

$$D(Q_i) = [E(X_{i1}) \times E(EG) + E(X_{i2}) \times E(VVG) + \dots + E(X_{i11}) \times E(EB)] / [E(X_{i1}) + E(X_{i2}) + \dots + E(X_{i11})] \quad (3)$$

$E(X_i)$ is expected satisfaction value of vague satisfaction value X_i , $1 \leq i \leq 11$, and $0 \leq D(Q_i) \leq 1$. The larger the value of $D(Q_i)$, the higher the degree of satisfaction that the answer of question Q_i satisfies the evaluator's opinion.

Step 3: Based on Step 2 output, find the matching satisfaction level. Input that in fuzzy grade sheet as shown Table 4.

Step 4: Calculate α -cut of each fuzzy mark F_i , based on degree of confidence of evaluator

$$(F_i)_\alpha = [a_{i1}, a_{i2}], \text{ where } \alpha \in [0,1] \quad (4)$$

Step 5: Calculate interval-valued mark $[m_{i1}, m_{i2}]$ of each question Q_i , where

$$[m_{i1}, m_{i2}] = \left[\frac{s_i}{s_1 + s_2 + \dots + s_n} * [a_{i1}, a_{i2}] \right] \quad (5)$$

Step 6: Calculate defuzzified crisp mark of each question Q_i using optimism index λ .

$$Q_{i_mark} = (1 - \lambda) * m_{i1} + \lambda * m_{i2} \quad (6)$$

$$\text{Total_Mark_of_Student_} S_j = \sum_{i=1}^n Q_{i_mark} \quad (7)$$

Step 7: Store these Total_Mark_of_Student in Mark database along with the corresponding evaluators' index of optimism λ .

Marks are of three categories depending upon λ value,

If $\lambda < 0.5$, Evaluator and the marks are strict (g_{L_i}),

If $\lambda = 0.5$, Evaluator and the marks are normal (g_{N_i}),

If $\lambda > 0.5$, Evaluator and the marks are lenient (g_{H_i})

Module 3: Grade Membership Function Constructor

Index of optimism is used to extract strict / normal / lenient type marks using which the grade membership functions are constructed. This module is shown in figure 4.

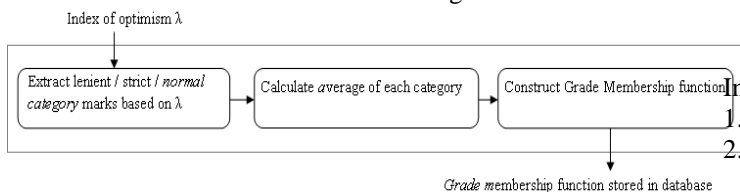


Fig 4 Mapping grade membership function generator

Input:

1. Evaluators' index of optimism λ , where $\lambda \in [0, 1]$,
2. Total marks

Output:

Grade membership functions (Strict / Lenient to Normal)

Algorithm:

Step 1: Calculate the total average strict-type grade

$$\text{Avg } G_{L \text{ of } g_{L_i}}, \quad \text{Avg } G_L = \frac{\sum_{i=1}^{m1} g_{L_i}}{m} \quad (8)$$

Calculate the total average normal-type grade $\text{Avg } G_N$ of g_{N_i}

$$\text{Avg } G_N = \frac{\sum_{i=1}^{m2} g_{N_i}}{m} \quad (9)$$

Calculate the total average lenient-type grade $\text{Avg } G_H$ of g_{H_i}

$$\text{Avg } G_H = \frac{\sum_{i=1}^{m3} g_{H_i}}{m} \quad (10)$$

where $m1, m2, m3$ are number of students of strict/normal/lenient type categories respectively, and m is total number of students ($m=m1+m2+m3$)

Step 2: Use parabolic curve interpolation techniques to get the most appropriate relational function between

(g_{L_i} and g_{N_i}) and between (g_{H_i} and g_{N_i}) respectively.

Module 4: Marks Transformer

Final evaluation mark sheet is generated after marks are transformed to normal type. This marksheet shows the detailed information. This module is shown in figure 5.

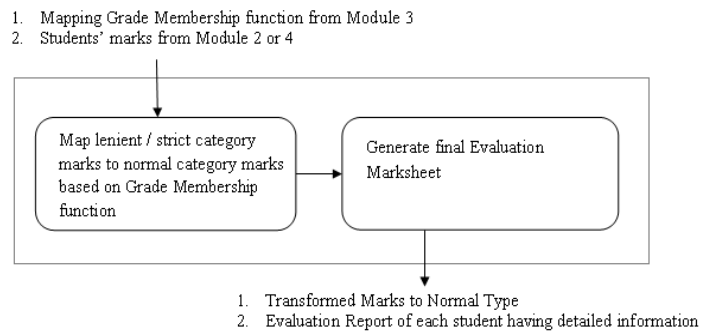


Fig 5 Marks transformer

Input:

1. Grade membership functions
2. Total marks obtained from Module 2 or module 4

Output:

Transformed normal type marks stored in database

Step 2: Produce final student evaluation mark sheet showing detail information.

Algorithm:

Step 1: Convert (Strict type / Lenient type) marks obtained in Step 6 of module 2 to normal marks using grade membership function obtained in Step 2 of Module 3 and store final result in database.

Module 5: Result Adjuster

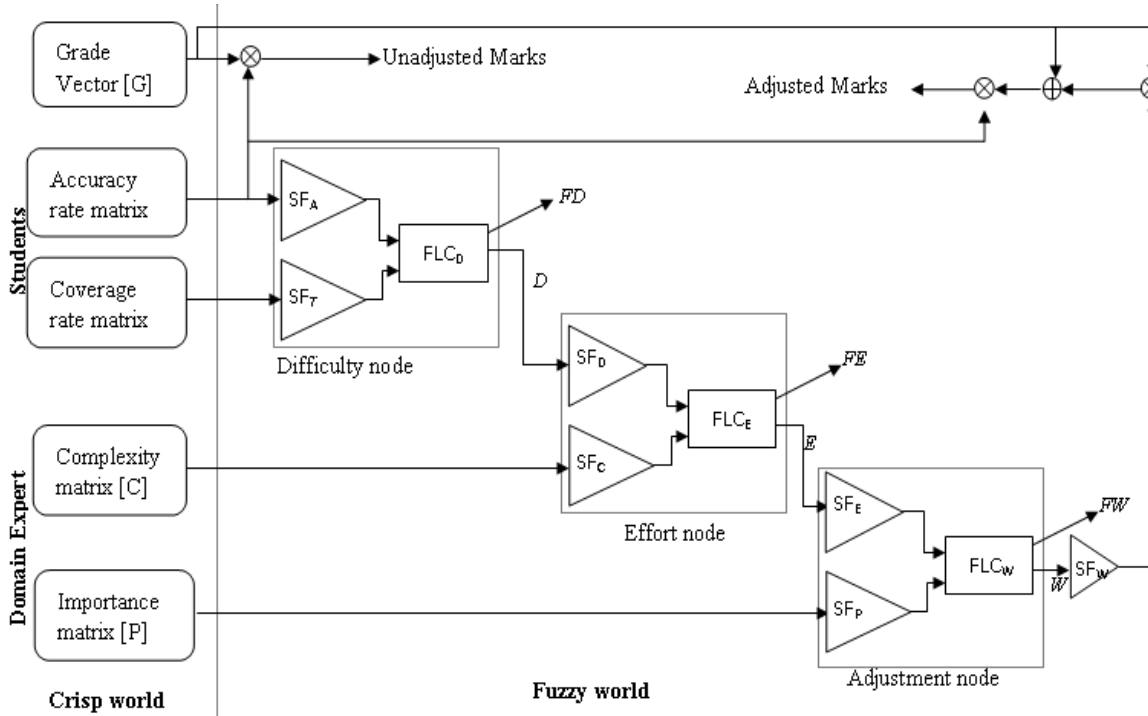


Fig 6(a): Result adjuster

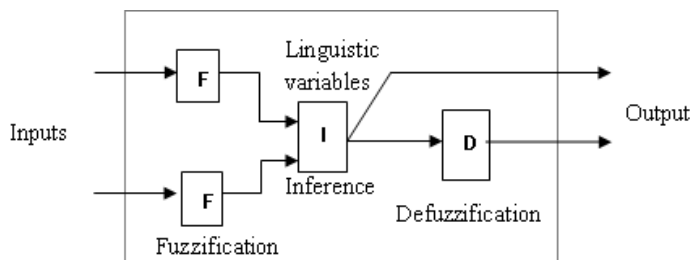


Fig 6(b): Representation of node process as a fuzzy logic controller

Difficulty and Complexity level of each question in the question paper are taken from domain expert. Accuracy & Coverage rate of each answer is generated using marks and coverage level obtained from Module 2 respectively. Result obtained by Module 2 is adjusted with respect to complexity and difficulty of question paper. This module is shown in figure 6(a) [6]. Fuzzy logic controller is shown in 6(b) [6].

Input:

1. Each Question level marks & coverage level obtained from module 2,
2. Grade Vector [G] denoting the assigned maximum score of each question,
3. Complexity & Importance matrices given by Domain Expert

Output:

1. Adjusted total marks stored in database

Algorithm:

Step 1: Generate the Accuracy matrix $A[a_{ij}]_{m \times n}$,

$$a_{ij} = \frac{Q_{i_mark}}{\text{Weightage_Mark_of_Question_}Q_i} \quad (11)$$

Where, m is the total number of questions in question paper and n is the total number of students. Generate the coverage matrix $T[c_{ij}]_{m \times n}$, where c_{ij} is (coverage level / total number of coverage points) of each question Q_i . Coverage level is obtained from Step 1 of Module 1.

Step 2: Based on the accuracy rate matrix A and the coverage matrix T, calculate the average accuracy rate

$AvgA_i$ and the average coverage rate $AvgT_i$ for each question Q_i , as:

$$AvgA = \frac{\sum_{j=1}^n a_{ij}}{n} \quad (12)$$

$$AvgT_i = \frac{\sum_{j=1}^n t_{ij}}{n} \quad (13)$$

Where n is total number of students.

Based on fuzzy sets “low”, “more or less low”, “medium”, “more or less high” and “high” shown in figure7, fuzzy the average accuracy rate $AvgA_i$ and average coverage rate $AvgT_i$ for each Q_i and calculate their membership grades belonging to each fuzzy set, respectively. Then, we can get the fuzzy score matrix F_A for the average accuracy and can get the fuzzy score matrix F_T for the average answer-coverage rate, shown as follows:

$$F_A = [f_{a_{ij}}]_{m \times 5} \quad (14)$$

$$F_T = [f_{t_{ij}}]_{m \times 5} \quad (15)$$

where $f_{a_{ij}} \in (0,1)$ and $f_{t_{ij}} \in (0,1)$ denotes the membership value of the score and coverage of ith question Q_i belonging to the jth fuzzy set shown in Figure 7.

Step 3:

3.1 Obtain the weights of accuracy rate W_A and coverage rate W_T to perform fuzzy reasoning. These weights are decided by domain experts ($W_A + W_T = 1$).

Based on fuzzy accuracy rate matrix F_A , fuzzy coverage rate matrix F_T and fuzzy rules R_D given in the form of IF-THEN rules, the fuzzy difficulty matrix is derived as $D = [d_{ik}]_{m \times 1}$ where m is total number of questions and 1 is total number of levels as per the fuzzy sets in figure 7. $d_{ik} \in (0,1)$ denotes the membership value of the difficulty of question i belonging to level k.

The value of d_{ik} is obtained as:

$$d_{ik} = \max_{((A,T) \in R_D, (A,T)=k)} \{WA * f_{a_{i,A}} + WT * f_{t_{i,T}}\} \quad (16)$$

Weight of the difficulty D & complexity C matrix WD & WC can be determined by domain expert such that ($WD + WC = 1$).

3.2 Based on the fuzzy difficulty matrix D, and the fuzzy complexity matrix C, given the fuzzy rules RE, we obtain the effort (i.e., answer cost) matrix of dimension $m \times 1$, in the same manner as we obtained the difficulty matrix

above,

$$E = [e_{ik}]_{m \times 1} \quad (17)$$

Where $e_{ik} \in [0, 1]$ denotes the membership value of the effort to answer question i belonging to level k, which is a measure of effort required by students to answer question i.

3.3 Weight of the effort E & importance P matrices, W_E & W_P can be determined by a domain expert such that ($W_E + W_P = 1$)

3.4 Based on the fuzzy effort matrix E, and fuzzy importance matrix P with their weight W_E, W_P , we obtain the adjustment matrix of dimension $m \times 1$

$$W = [W_{ik}]_{m \times 1} \quad (18)$$

Where $w_{ik} \in [0, 1]$ denotes the membership value of the adjustment to answer question i belonging to level k.

We use the following formula to obtain the adjustment vector,

$$\bar{W} = [w_{i \bullet}]_{m \times 1} \quad (19)$$

Where $w_{i \bullet} \in [0,1]$ denotes the final adjustment value required by question i obtained by

$$w_{i \bullet} = \frac{0.1 * w_{i1} + 0.3 * w_{i2} + 0.5 * w_{i3} + 0.7 * w_{i4} + 0.9 * w_{i5}}{0.1 + 0.3 + 0.5 + 0.7 + 0.9} \quad (20)$$

Where 0.1, 0.3, 0.5, 0.7 and 0.9 are the centres of fuzzy membership functions shown in Figure 7.

Step 4:

We calculate the bias B as follows, here AV is nothing but W

$$(g_1 * AV_1) * B + (g_1 * AV_1) * B + \dots (g_m * AV_m) * B = 100 \quad (21)$$

$$B = \frac{\sum_{i=1}^m g_i}{\sum_{i=1}^m g_i * AV_i} \quad (22)$$

Step 5: Calculate the assigned score AS_i after the adjustment of the ith question Q_i , shown as:

$$AS_i = g_i * W_i * B \quad (23)$$

Finally, we can obtain the adjusted total score ATS_j of the student S_j , where

$$ATS_j = a_{ij} * AS_i \quad (24)$$

V. RESULTS

We are still in progress for implementation of module 3, 4, and 5. Following are results of MATLAB implemented module 1, and 2 of proposed fuzzy evaluation system

Module 1: Index of Optimism Calculator

[0.57, 0.64, 0.21, 0.28, 0, 0.71, 1, 0.14, 0.07, 0.35];

Total Evaluators = 10,

Students' marks assessed by different teachers,

Module 2: Fuzzy Evaluation Marksheet

T = [69, 70, 64, 65, 61, 71, 75, 63, 62, 66];

Assume Index of optimism (λ) = 0.60

Index of Optimism $\lambda =$

TABLE 1: SATISFACTION LEVELS AND THEIR CORRESPONDING VAGUE SATISFACTION VALUES

Satisfaction levels	Vague satisfaction values
Extremely Good (EG)	[1,1]
Very Very Good (VVG)	[0.90,0.99]
Very Good (VG)	[0.80,0.89]
Good (G)	[0.70,0.79]
More or less Good (MG)	[0.60,0.69]
Fair (F)	[0.50,0.59]
More or less Bad (MB)	[0.40,0.49]
Bad (B)	[0.25,0.39]
Very Bad (VB)	[0.10,0.24]
Very Very Bad (VVB)	[0.01,0.09]
Extremely Bad (EB)	[0,0]

TABLE 2: VAGUE MARK REPRESENTED BY VAGUE VALUES OF THE QUESTION Q. I IN A VAGUE GRADE SHEET

Question No.	Points covered (pc)	Satisfaction levels											Degree of satisfaction	
		EG	VVG	VG	G	MG	F	MB	B	VB	VVB	EB		
.
Q. i	pci	X1	X2	X3	X4	X5	X6	X7	X8	X9	X10	X11	.	
.	
.	

TABLE 3: EXPECTED TRUTH VALUES OF VAGUE TRUTH VALUES OF THE QUESTION Q.I OF TABLE 3.2

Question No.	Points covered (pc)	Satisfaction levels											Degree of satisfaction
		EG	VVG	VG	G	MG	F	MB	B	VB	VVB	EB	
.
Q. i	pci	E(X1)	E(X2)	E(X3)	E(X4)	E(X5)	E(X6)	E(X7)	E(X8)	E(X9)	E(X10)	E(X11)	.
.
.

TABLE 4: FUZZY GRADE SHEET WITH SATISFACTION LEVELS ASSOCIATED WITH DEGREE OF CONFIDENCE

Question No.	Satisfaction levels	Degree of confidence of satisfaction levels
Q.1	F1	α
Q.2	F2	β
Q.3	F3	γ
.	.	.
Q.n	Fn	δ
		Total Mark=Degree of Confidence of Total Mark

TABLE 3.5: FUZZY RULE BASES TO INFER DIFFICULTY AND EFFORT

(a) Fuzzy Rule base RD for obtaining Difficulty (b) Fuzzy Rule base for RE obtaining Effort

Accuracy	Coverage rate				
	1	2	3	4	5
1	5	5	4	4	3
2	5	4	4	3	2
3	4	4	3	2	2
4	4	3	2	2	1
5	3	2	2	1	1

Difficulty	Complexity				
	1	2	3	4	5
1	1	1	2	2	3
2	1	2	2	3	4
3	2	2	3	4	4
4	2	3	4	4	5
5	3	4	4	5	5

1: "Low", 2: "more or less low", 3: "medium", 4: "more or less high", 5: "high"

TABLE 5: SATISFACTION LEVELS, CORRESPONDING VAGUE SATISFACTION VALUES, EXPECTED VAGUE TRUTH VALUES

Satisfaction levels	Vague satisfaction values (Y)	E(Y)
Extremely Good (EG)	[1,1]	1.0
Very Very Good (VVG)	[0.90,0.99]	0.954
Very Good (VG)	[0.80,0.89]	0.854
Good (G)	[0.70,0.79]	0.754
More or less Good (MG)	[0.60,0.69]	0.654
Fair (F)	[0.50,0.59]	0.554
More or less Bad (MB)	[0.40,0.49]	0.454
Bad (B)	[0.25,0.39]	0.334
Very Bad (VB)	[0.10,0.24]	0.184
Very Very Bad (VVB)	[0.01,0.09]	0.058
Extremely Bad (EB)	[0,0]	0

TABLE 6: VAGUE MARK REPRESENTED BY VAGUE VALUES OF THE QUESTION Q. I IN A VAGUE GRADE SHEET

Question No.	Degree of Confidence	Satisfaction levels										Degree of satisfaction	
		EG	VVG	VG	G	MG	F	MB	B	VB	VVB		EB
Q.1	0.75	[0.8,0.9]	[0.9,0.95]	[0,0]	[0,0]	[0,0]	[0,0]	[0,0]	[0,0]	[0,0]	[0,0]	[0,0]	[0,0]
Q.2	1.0	[0,0]	[0,0]	[0,0]	[0.6,0.7]	[0.9,0.95]	[0.55,0.6]	[0,0]	[0,0]	[0,0]	[0,0]	[0,0]	[0,0]
Q.3	0.75	[0,0]	[0,0]	[0.85,0.9]	[0.75,0.8]	[0.5,0.6]	[0,0]	[0,0]	[0,0]	[0,0]	[0,0]	[0,0]	[0,0]
Q.4	0.95	[0,0]	[0,0]	[0,0]	[0,0]	[0,0]	[0,0]	[0,0]	[0.5,0.6]	[0.9,0.95]	[0.2,0.4]	[0,0]	[0,0]

TABLE 7: EXPECTED TRUTH VALUES OF VAGUE TRUTH VALUES OF THE QUESTION Q.I OF TABLE 4.10

Question No.	Degree of Confidence	Satisfaction levels											Degree of satisfaction
		EG	VVG	VG	G	MG	F	MB	B	VB	VVB	EB	
Q.1	0.75	0.86	0.93	0	0	0	0	0	0	0	0	0	0.976
Q.2	1.0	0	0	0	0.66	0.93	0.58	0	0	0	0	0	0.658
Q.3	0.75	0	0	0.88	0.78	0.56	0	0	0	0	0	0	0.768
Q.4	0.95	0	0	0	0	0	0	0	0.56	0.93	0.32	0	0.208

Calculate α -cut of each fuzzy mark F_i , based on degree of confidence of evaluator

(Very Very Good) 0.75 = [94, 96]

(More or Less good) 1.0 = [65, 65]

(Good) 0.75 = [74, 76]

(Very Bad) 0.95 = [17, 17]

TABLE 8: FUZZY GRADE SHEET WITH SATISFACTION LEVELS ASSOCIATED WITH DEGREE OF CONFIDENCE

Question No.	Satisfaction levels	Degree of confidence of satisfaction levels
Q. 1	Very Very Good	0.75
Q.2	More or Less good	1.0
Q. 3	Good	0.75
Q. 4	Very Bad	0.95
Total Mark obtained by Module 2 =		59

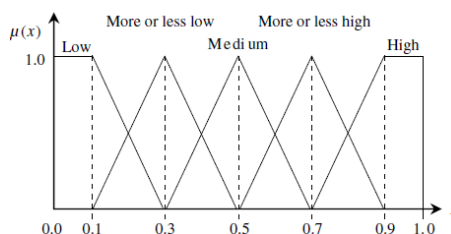


Fig. 7: Fuzzy membership functions of five levels

VI. CONCLUSION

By introducing a new fuzzy evaluation sheet, we believe it portrays additional information on students' performances in answering each question in a test or examination compared to conventional marking method. Moreover, this approach can be used to compare students' performances which have the same final linguistic terms by looking into each question and each criterion. This information can be very useful and beneficial for students, instructors, and other authorized or related bodies to have overall picture of students' performances.

Time reduction is yet another goal. The task of grading students' answerscripts is very repetitive and labour intensive. Faithful application of scoring rubric takes considerable amount of time. The proposed system leads to quicker and valid evaluation as it maintains the consistency while evaluating the answerscripts.

REFERENCES

- [1] S. M. Bai and S. M. Chen, "Automatically constructing grade membership functions for students' evaluation for fuzzy grading systems," In proceeding *World Automation Congress (WAC)*, Budapest, Hungary, 2006.
- [2] R. Biswas, "An application of fuzzy sets in students' evaluation," *Fuzzy Sets System*, vol. 74, 1995.
- [3] S. M. Chen and C. H. Lee, "New methods for students' evaluating using fuzzy set," Proceedings of *International Conference on Artificial Intelligence*, 1996.
- [4] Shyi-Ming Chen, Hui-Yu Wang "Evaluating students' answerscript based on interval-valued fuzzy grade sheets", *ELSEVIER Journal of Expert System with Application*, Vol 36, 2009.
- [5] Hui-Yu Wang and Shyi-Ming Chen, "Evaluating Students' Answerscripts Using Fuzzy Numbers Associated With Degrees of Confidence", *IEEE Transactions on Fuzzy Systems*, Vol. 16, No. 2, April 2008.
- [6] Ibrahim Saleh, Seong-in Kim, "A fuzzy system for evaluating students' learning achievement", *Expert Systems with Applications*, Vol. 36, 2009.
- [7] Ting-Kueili, Shyi-Ming Chen, "A new method for students' learning achievement evaluation by automatically generating the weights of attributes with fuzzy reasoning capability", Proceedings of *the Eighth International Conference on Machine Learning and Cybernetics, Baoding, IEEE* 2009.
- [8] James R. Nolan, "An expert fuzzy classification system for supporting the grading of student writing samples", *Expert Systems With Applications*, Vol. 15, 1998.
- [9] Hui-Yu Wang · Shyi-Ming Chen, "Evaluating students' answerscripts using vague values", *Appl Intell*, Vol. 28, 2008.
- [10] Bardul and Mohamad, "A Fuzzy Approach on Students' Answer Scripts Criteria Based Evaluation".
- [11] Hui-Yu Wang and Shyi-Ming Chen, "New Methods for Evaluating the Answerscripts of Students Using Fuzzy Sets", *IEA/AIE 2006, LNAI 4031*, 2006.
- [12] Chih-Hsun Hsies, "Evaluating students' answerscripts with fuzzy arithmetic", *Tamsui Oxford Journal of Management Sciences*, Vol 12, 1996.
- [13] Bardul and Mohamad, "A fuzzy set approach on students' answerscripts evaluation".